

SKYLINE



SKYLINER
The Fun & Easy Series



SKYLINER - FUN & EASY SERIES

The **Skyliner - Fun and Easy** Series is a family of homes designed with our homebuyers in mind by making the homebuying experience to be **Fun and Easy!**

The **Fun and Easy** Series is built with high-end standards such as a granite kitchen countertop, stainless steel appliances, tall hardwood cabinets, upgrade faucets, upgrade interior finishes, 9ft sidewall with a flat ceiling, upgrade exterior, and other luxurious standard amenities.

Simply find the floor plan that meets your needs and choose your colors.

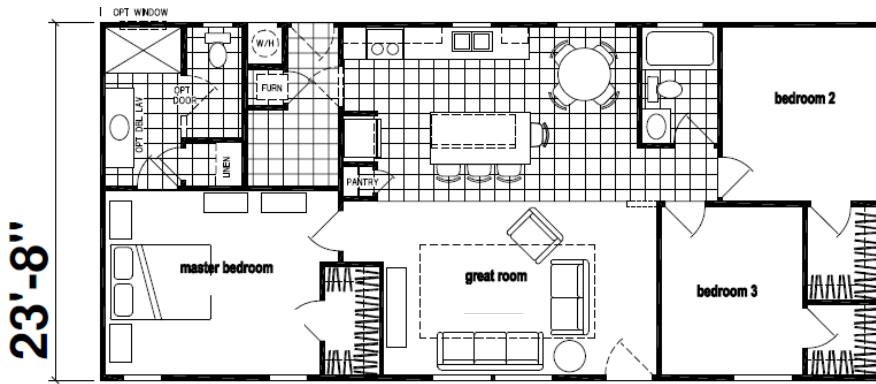
It's that **Fun and Easy!**



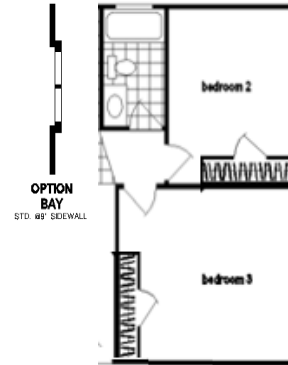
SKYLINER - FUN & EASY SERIES

The **Fun and Easy** Series has a variety of floor plans to meet any homebuyers needs. The choice is all yours!

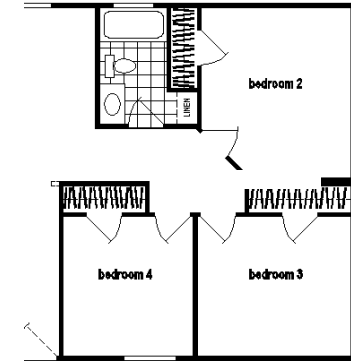
- ❖ Spec Level – Build with standard specifications or select the Better-to-Best High Value Package
- ❖ 3 Floor plans to select from
- ❖ 2 Floor Widths – 24-wide and 28-wide
- ❖ 3 Floor Lengths – 52 ft, 56 ft and 60 ft
- ❖ Total of 18 floor plans to select from



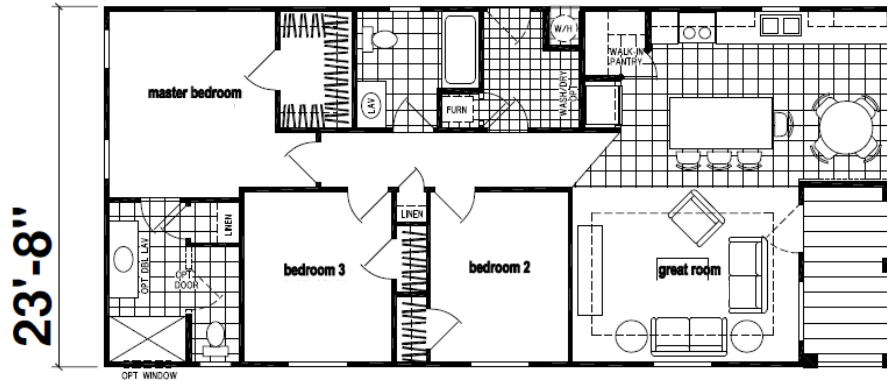
Model H100A - 52', 56', 60'



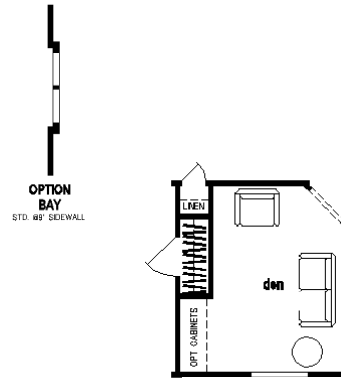
Optional Closets



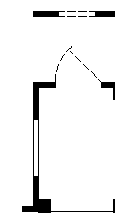
Optional 4th Bedroom



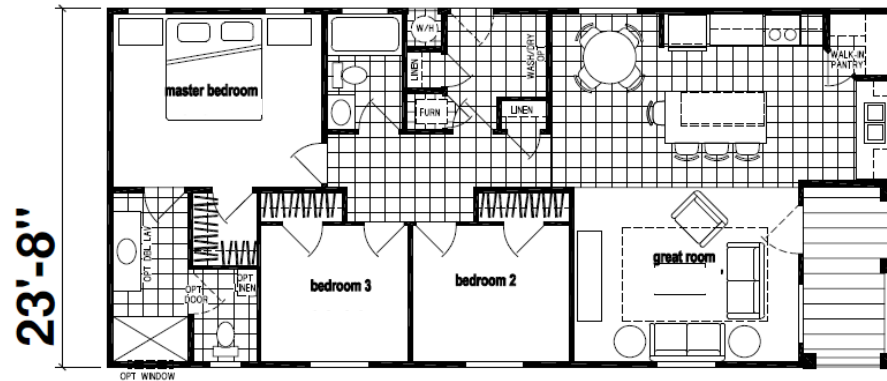
Model H101A 52', 56', 60'



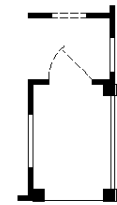
Optional Den



Optional Entry

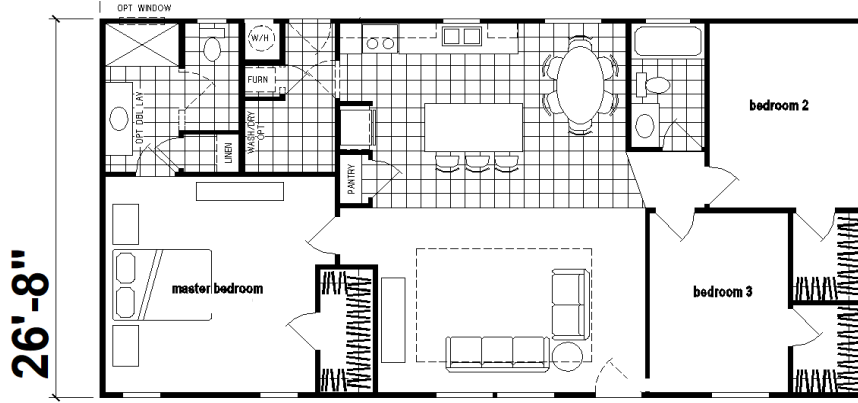


Model H102A 52', 56', 60'

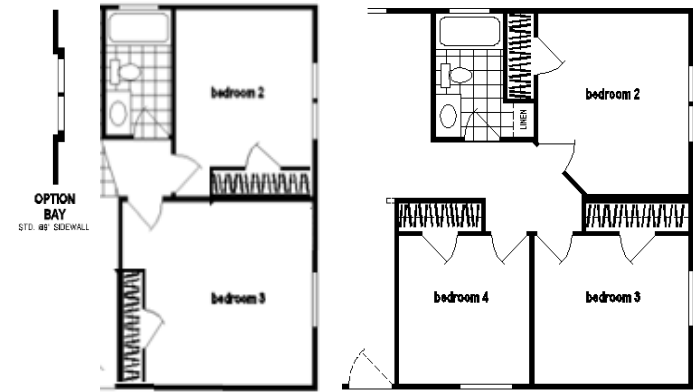


Optional Entry

*Note: Living room tray shown is optional in Better and standard in Best series. Specifications and Layout May Change without Notice.

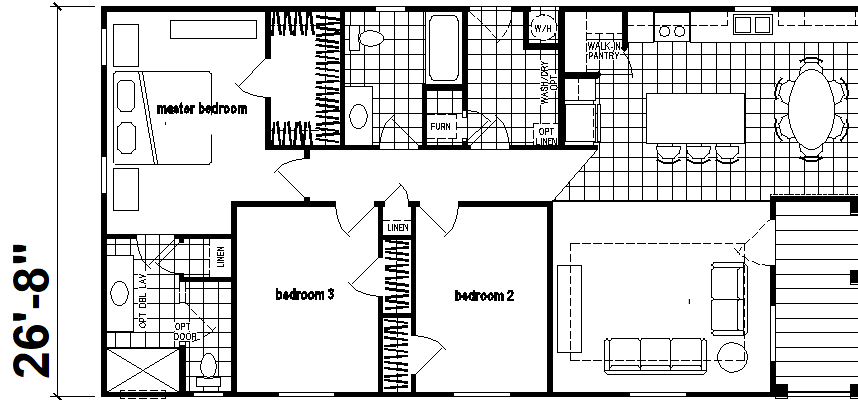


Model H200A - 52', 56', 60'

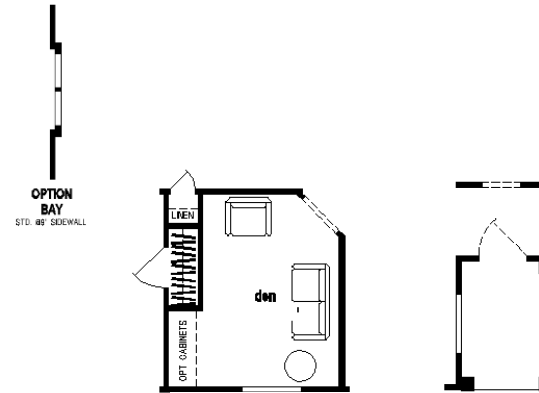


Optional Closets

Optional 4th Bedroom

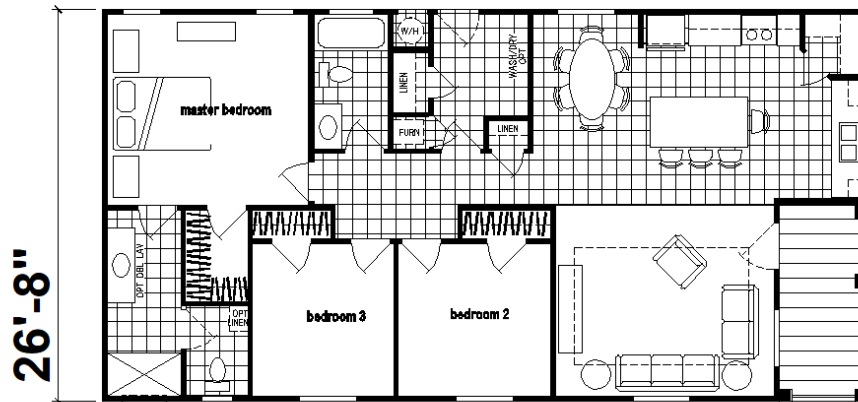


Model H201A 52', 56', 60'

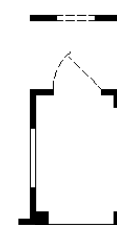


Optional Den

Optional Entry



Model H202A 52', 56', 60'



Optional Entry

*Note: Living room tray shown is optional in Better and standard in Best series. Specifications and Layout May Change without Notice.



H100 & H200 - Split Bedrooms Model (Shown w/ 4th Bedroom Option)



H101 & H201 - Front Dining Room Model



H102 & H202- Front Kitchen Model

CONSTRUCTION

- 9' Sidewalls with Flat Ceiling
- 2X6 Floor Joists
- 2X6 Exterior Sidewalls
- R33 Ceiling Insulation
- R19 Wall Insulation
- R22 Floor Insulation
- 20lb Roof Load
- 3:12 Roof Pitch
- Tongue and Groove OSB Floor Decking
- Dual-Glazed Vinyl Framed Low-E Windows
- Steel Outriggers on Exterior Walls

EXTERIOR

- Upgrade Exterior on End Wall
- Vertical Cement Fiber Siding on Balance
- Class "A" Architectural Roof Shingles
- 2x6 Exterior Window Trim Throughout
- Exterior Light at Front and Rear Doors
- 36" Craftsman Front Door with Deadbolt
- 32" Cottage Rear Door with Deadbolt
- 12" Front Overhang
- 6" Side Eaves (Per Plan)
- 77" Tall Mulled Windows Living Room and Bedrooms

INTERIOR

- ½" Tape and Texture Drywall Throughout
- Hand-Finished Knock-Down Texture
- Low Sheen Interior Paint
- 3-¼" Sculptured Floor Molding
- 2-Panel Interior Doors with 3-Mortised Hinges
- 2-Panel Utility Room Passage Door with Air Grill
- 2-Panel Furnace Door with Drywall Backer
- Satin Nickel Lever Door Handles
- Shaw Carpet
- 3/8" Rebond Carpet Pad
- Vinyl Flooring in Kitchen, Dining Room, Baths and Utility
- 2" Faux Wood Blinds with Faux Wood Valance
- Double Wood Shelf & Pole in Master Bedroom Closet
- Single Wood Shelf and Pole in Guest Bedroom Closets
- Wood Shelving in Hall Closet and Linen Closets
- Wood Shelf and Pole Above Washer/Dryer Area
- Toe Kick Registers in Kitchen and Baths

KITCHEN

- Hardwood Shaker Style Cabinets
- 42" Tall Overhead Cabinets Kitchen
- 24" Deep Refrigerator Overhead Cabinet
- ¾" Adjustable Base and Overhead Shelves
- Drawer Over Door Construction
- Bank of Drawers
- Granite Countertop with Self Edge
- 4" Granite Backsplash
- Large Gourmet Island with 2-Large Drawer Banks
- Pantry with 4-18" Deep Shelves
- Full Extension Ball Bearing Drawer Guides
- Whirlpool® Stainless Steel Appliances
 - 25 Cu. Ft. Side-By-Side Refrigerator
 - 30" Self-Cleaning Gas Range
 - 30" Microwave Range Hood
 - Dishwasher
- Deep Undermount Stainless Steel Sink
- High Arch Single Lever Faucet with Pullout Sprayer with Chrome Finish

ELECTRICAL / HEATING / PLUMBING

- 100 AMP Exterior Electrical Panel Box
- G.F.I. Protected Outlets in Kitchen and Baths
- PEX Water Lines
- Shut Off Values at Sinks and Toilets
- Exterior G.F.I. Protected Outlet
- USB Receptacle in Kitchen Area
- Smoke Detectors with Battery Back-Up
- Switch Wall Outlet in Living Room and Bedrooms
- Recessed LED Can Lights
- Dining Room Chandelier
- Silent Rocker Light Switches
- Fan Prep Living Room and Master Bedroom
- 3-Way Switch in Hall and Utility Room
- 40-Gallon Gas Water Heater
- Down Flow Gas Furnace
- Manual Thermostat
- Plumb for Icemaker
- Plumb for Washer
- Prep for Gas Dryer
- Recessed Dryer Vent Box

MASTER BATH

- 60" Fiberglass Walk-in Shower
- Clear Shower Enclosure
- China Self Rimming Sink with Overflow and Pop-Up Drain
- Single Lever Shower Value with Chrome Finish
- Single Lever Faucets with Chrome Finish
- Elongated Water-Saver Commode
- Vanity Light Fixture
- Vanity Mirror with Beveled Edge
- Ceiling Exhaust Fan with Light
- 36" High Countertop
- Laminate Countertop
- Laminate Crescent Edge
- 6" Laminate Backsplash
- (2) Drawer Banks
- Full Extension Ball Bearing Drawer Guides
- Linen Closet with 4-18" Deep Shelves
- Ventilation Window
- Towel Bar and Tissue Holder
- Privacy Lock

HALL BATH

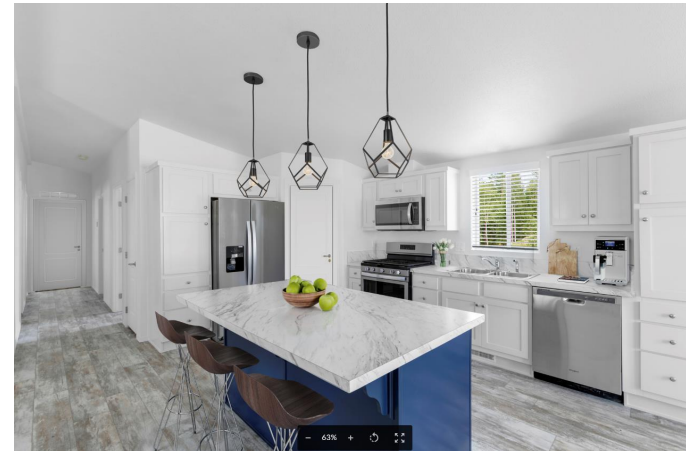
- 60" One-Piece Fiberglass Tub / Shower
- China Self Rimming Sink with Overflow and Pop-Up Drain
- Single Lever Tub/Shower Diverter with Chrome Finish
- Single Lever Faucets with Chrome Finish
- Elongated Water-Saver Commode
- Vanity Light Fixture
- Vanity Mirror with Beveled Edge
- Ceiling Exhaust Fan with Light
- 36" High Countertop
- Laminate Countertop
- Laminate Crescent Edge
- 6" Laminate Backsplash
- Ventilation Window
- Towel Bar and Tissue Holder
- Privacy Lock

Due to continuous product development and improvement, prices, specifications, and materials are subject to change without notice or obligation. Square footage and other dimensions are approximate. Exterior images may be artist renderings and are not intended to be an accurate representation of the home. Renderings, photos and floor plans may be shown with optional features or third-party additions. All floor plans and features are subject to local code approval.

Go from Better to Best!

Best Value Package Highlights

- Upgrade Exterior
- Bay Window
- Granite Kitchen Countertop, Self Edge and 4" Backsplash
- Granite Kitchen Windowsill
- Granite Master Bath Countertop, Self Edge and 4" Backsplash
- Granite Master Bath Shower Walls with Shampoo Shelf
- Granite Guest Bath Countertop, Self Edge and 4" Backsplash
- Nickel High Arch Kitchen Faucet with Pull Down Sprayer
- Master Bath Dual Lavy
- Master Bath Enclosed Toilet Compartment
- Nickel Upgrade Master Bath Clear Shower Door
- Rectangular Undermount Bath Sinks
- Nickel Single Lever Bath Faucets
- Nickel Towel Bar and Tissue Holder
- Ceiling Fan Installed in Living Room and Master Bedroom
- (2) Pendant Lights over Island with Alabaster Glass
- (8) 4" Recessed Can Lights in Kitchen, Hall, Guest Bath and Master Bath
- Upgrade 3-Arm Dining Room Chandelier
- TV Prep at Standard Height in Living Room
- 5" Coastal Floor Molding
- 3" Coastal Door Casing



Due to continuous product development and improvement, prices, specifications, and materials are subject to change without notice or obligation. Square footage and other dimensions are approximate. Exterior images may be artist renderings and are not intended to be an accurate representation of the home. Renderings, photos and floor plans may be shown with optional features or third-party additions. All floor plans and features are subject to local code approval. *Some items in package are charged separately due to the variety of floor lengths.